

EURO 1 ONE

PLASTIC INDUSTRIES

The company has obtained many certificates: ISO 45001:2018 for occupational health & safety management, ISO 9001:2015 for quality management, ISO 14001:2015 for environmental management, and ISO 22000:2018 for food safety management.



+2048 265 0698
+201090801111



A/B Section 11, 3rd Industrial region,
Sadat City, Egypt



Euro1Plast
info@euro-1.com

EURO 1 ONE
PLASTIC INDUSTRIES

صُناع المستقبل
FUTURE MAKERS

EURO ONE PLAST was established in order to fill the shortage in the market needs of polyethylene pipes and parts.

And providing a native product with international standard specifications, keeping pace with developments and needs, and being an influential participant in the plastics industry sector.

To achieve this, we used the latest machines, the best human competencies and the finest materials.

The result was the presence of an Egyptian product that calls for pride, conforming to international standards, and has succeeded in passing many approved tests.

The company has obtained many certificates: ISO 45001:2018 for occupational health & safety management, ISO 9001:2015 for quality management, ISO 14001:2015 for environmental management, and ISO 22000:2018 for food safety management.



OUR VISION

is to strengthen the Egyptian economy, and to satisfy the customer with a competitive international quality product with unbeatable economic cost, especially the increasing need for the products of the water and wastewater sector, the modern irrigation sector and gas etc.



OUR GOAL

is to provide products that make a clear mark in the Egyptian and Middle Eastern market, and for the Euro One Plast name to remain synonymous with high quality.

And all for the sake of the continuity of our clear policy: customer satisfaction.

تأسست شركة يورو وان بلاست لأجل سد النقص في احتياجات السوق من مواسير وقطع البولي ايثيلين. وتوفير منتج محلي بمواصفات عالمية قياسية، مواكب للتطورات والاحتياجات، وأن نكون مشاركين مؤثرين في قطاع صناعة البلاستيك. ولتحقيق ذلك قمنا باستخدام أحدث الآلات وأفضل الكفاءات البشرية وأجود الخامات وكانت النتيجة وجود منتج مصري يدعو للفخر، موافق للقياسات العالمية، وقد نجح في اجتياز كثير من الاختبارات المعتمدة.



وقد حصلت الشركة على شهادات كثيرة منها: الأيزو 45001:2018 في إدارة السلامة والصحة المهنية، والأيزو 9001:2015 في إدارة الجودة، والأيزو 14001:2015 في إدارة البيئة، وكذلك الأيزو 22000:2018 في إدارة سلامة الغذاء.



إن رؤيتنا تدعيم الاقتصاد المصري، وإرضاء العميل بمنتج ذي جودة عالمية منافسة وتكلفة اقتصادية لا تنافس، خصوصا في ظل زيادة الحاجة لمنتجات قطاع المياه والصرف وقطاع الري الحديث والغاز .



وهدفنا توفير منتجات تضع بصمة واضحة في السوق المصري والشرق الأوسط، وأن يظل اسم يورو وان بلاست مرادفا للجودة العالية. وكل ذلك من أجل استمرارية سياستنا الواضحة: إرضاء العميل.

HDPE fittings

قطع بولي ايثيلين عالية الكثافة

Polyethylene (PE) is one of the most popular thermoplastic materials.

It is available in different crystalline structures, referred to as HDPE, LDPE, and LLDPE. This commodity plastic is produced by addition or radical polymerization. It is used in a large array of applications etc.





FLANGE ADAPTER

Ø 32 [mm] - Ø1600 [mm]

(برکة)

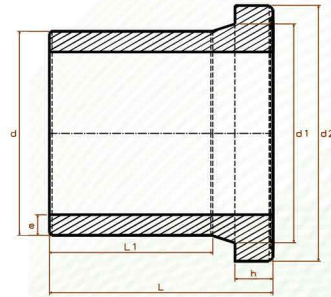




INJECTION FLANGE ADAPTER (LONG TYPE)

PE100 – SDR 17 – PN10 ve SDR 11 – PN16

FLANGE
section



SEQ.	PRODUCT CODE	SIZE d [mm]	PRESSURE [bar]	L [mm]	L ₁ [mm]	h [mm]	d ₁ [mm]	d ₂ [mm]	e [mm]	WEIGHT [kg]	PCS PARCEL	PARCEL SIZE
1	97 1 551102	25	PN16	88,40	62,55	11,10	31,64	59,75	2,70	0,04	250	30/60/41
2	97 2 551103	32	PN10	85,20	57,40	10,80	39,75	67,70	2,30	0,04	200	30/60/41
	PN16		3,20						0,06			
3	97 1 551104	40	PN10	84,86	58,00	13,30	46,55	74,60	2,80	0,05	160	30/60/41
	PN16		4,04						0,08			
4	97 1 551105	50	PN10	85,68	52,40	16,14	56,25	82,53	3,40	0,08	120	30/60/41
	PN16		5,00						0,12			
5	97 1 551106	63	PN10	106,00	68,00	16,00	70,70	100,00	4,00	0,13	70	30/60/41
	PN16		6,50						0,19			
6	97 1 551107	75	PN10	107,30	77,64	20,70	89,30	117,95	4,80	0,19	50	30/60/41
	PN16		7,60						0,29			
7	97 1 551109	90	PN10	123,60	92,00	20,33	106,00	136,40	5,70	0,30	30	30/60/41
	PN16		9,20						0,45			
8	97 1 551111	110	PN10	136,90	94,00	19,00	123,00	153,10	7,40	0,51	24	30/60/41
	PN16		11,10						0,61			
9	97 1 551112	125	PN10	149,00	117,00	26,24	136,00	155,50	8,09	0,51	20	30/60/41
	PN16		12,50						0,76			
10	97 1 551114	140	PN10	137,70	94,00	26,30	143,50	184,90	9,00	0,68	20	41/60/46
	PN16		14,10						1,02			
11	97 1 551116	160	PN10	175,26	127,30	29,80	171,50	211,50	10,60	1,29	12	41/60/46
	PN16		16,20						1,58			
12	97 1 551118	180	PN10	136,90	165,95	28,60	191,12	213,00	11,23	1,11	12	41/60/46
	PN16		17,35						1,66			
13	97 1 551120	200	PN10	194,00	140,30	33,00	218,20	264,20	16,00	2,50	12	41/60/46
	PN16		18,70						2,73			
14	97 1 551122	225	PN10	188,10	138,10	36,80	234,00	268,00	14,40	2,38	12	41/60/46
	PN16		21,20						3,04			
15	97 1 551125	250	PN10	192,22	136,20	34,60	272,00	320,00	15,70	3,20	8	41/60/46
	PN16		24,80						4,18			
16	97 1 551128	280	PN10	181,20	132,10	36,70	287,00	319,00	18,20	3,30	8	41/60/46
	PN16		26,23						4,25			
17	97 1 551131	315	PN10	201,60	147,70	40,70	330,00	370,00	20,70	5,11	3	41/60/46
	PN16		24,80						6,43			
18	97 1 551135	355	PN10	212,40	149,80	46,55	368,00	418,00	21,51	5,73	2	41/60/46
	PN16		33,25						8,60			

ELBOW

Ø 32 [mm] - Ø1600 [mm]

(كوع)

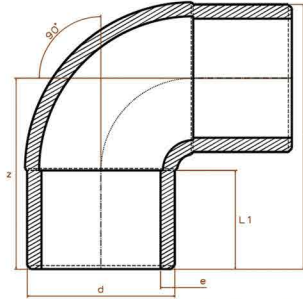




INJECTION 90 ° ELBOW

PE100 – SDR 17 – PN10 ve SDR 11 – PN16

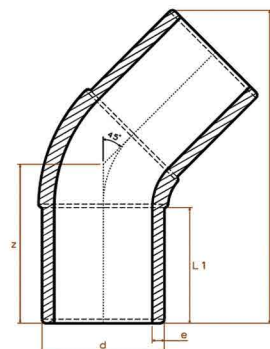
ELBOW
section



SEQ	PRODUCT CODE	SIZE d [mm]	PRESSURE [bar]	L [mm]	z [mm]	L ₁ [mm]	e [mm]	WEIGHT [kg]	IN A PARCEL	PCS PRICE
1	97 0 101003	32	PN10	69,40	53,40	28,50	2,30	0,02	200	30/60/41
	97 1 101003		PN16				3,20	0,03		
2	97 0 101004	40	PN10	106,00	86,00	49,00	2,80	0,08	70	30/60/41
	97 1 101004		PN16				4,05	0,12		
3	97 0 101005	50	PN10	128,00	103,00	61,20	3,40	0,11	65	30/60/41
	97 1 101005		PN16				4,65	0,17		
4	97 0 101006	63	PN10	147,00	115,50	62,80	3,80	0,22	52	30/60/41
	97 1 101006		PN16				6,50	0,33		
5	97 0 101007	75	PN10	167,00	129,50	66,10	4,50	0,29	40	30/60/41
	97 1 101007		PN16				7,40	0,44		
6	97 0 101009	90	PN10	202,00	157,00	85,60	5,40	0,51	24	30/60/41
	97 1 101009		PN16				8,60	0,77		
7	97 0 101011	110	PN10	210,00	155,00	82,40	6,70	0,96	20	41/60/46
	97 1 101011		PN16				10,10	1,06		
8	97 0 101012	125	PN10	240,00	177,50	94,00	7,50	1,04	10	30/60/41
	97 1 101012		PN16				12,50	1,56		
9	97 0 101014	140	PN10	250,00	180,00	95,90	8,80	1,31	12	41/60/46
	97 1 101014		PN16				14,10	1,97		
10	97 0 101016	160	PN10	292,53	210,00	108,00	10,15	2,10	8	41/60/46
	97 1 101016		PN16				15,40	2,76		
11	97 0 101018	180	PN10	310,00	220,00	108,80	11,70	2,47	6	41/60/46
	97 1 101018		PN16				16,60	3,71		
12	97 0 101020	200	PN10	347,00	247,00	121,00	12,10	3,55	4	41/60/46
	97 1 101020		PN16				19,42	5,33		
13	97 0 101022	225	PN10	378,00	265,00	124,00	14,00	4,32	6	50/60/50
	97 1 101022		PN16				21,60	6,48		
14	97 0 101025	250	PN10	400,00	275,00	127,00	15,40	5,57	4	50/60/50
	97 1 101025		PN16				22,80	8,35		
15	97 0 101028	280	PN10	435,17	295,17	120,00	17,00	7,24	1	50/60/50
	97 1 101028		PN16				26,00	10,86		
16	97 0 101031	315	PN10	505,00	347,50	151,70	20,40	12,90	1	50/60/50
	97 1 101031		PN16				30,00	19,35		

① INJECTION 45 ° ELBOW

PE100 – SDR 17 – PN10 ve SDR 11 – PN16



SEQ.	PRODUCT CODE	SIZE d [mm]	PRESSURE [bar]	L [mm]	z [mm]	L ₁ [mm]	e [mm]	WEIGHT [kg]	IN A PARCEL	PCS PRICE
1	97 0 984503	32	PN10	102,37	53,34	40,40	2,30	0,03	220	30/60/41
	97 1 984503		PN16				3,10	0,05		
2	97 0 984504	40	PN10	132,85	69,54	50,10	2,80	0,05	80	30/60/41
	97 1 984504		PN16				3,80	0,08		
3	97 0 984505	50	PN10	152,30	78,86	58,00	3,40	0,09	65	30/60/41
	97 1 984505		PN16				5,15	0,14		
4	97 0 984506	63	PN10	188,30	97,26	68,60	4,30	0,15	60	30/60/41
	97 1 984506		PN16				5,80	0,23		
5	97 0 984507	75	PN10	190,00	95,77	70,00	4,80	0,19	40	30/60/41
	97 1 984507		PN16				6,80	0,29		
6	97 0 984509	90	PN10	226,00	113,75	83,00	5,50	0,33	28	30/60/41
	97 1 984509		PN16				8,45	0,50		
7	97 0 984511	110	PN10	255,00	126,59	84,00	6,80	0,55	22	41/60/46
	97 1 984511		PN16				10,10	0,82		
8	97 0 984512	125	PN10	265,00	129,35	87,00	7,60	0,77	18	41/60/46
	97 1 984512		PN16				11,70	1,15		
9	97 0 984514	140	PN10	294,00	143,23	95,20	8,40	0,99	14	41/60/46
	97 1 984514		PN16				12,80	1,48		
10	97 0 984516	160	PN10	330,00	160,17	105,00	9,50	1,47	8	41/60/46
	97 1 984516		PN16				14,70	2,20		
11	97 0 984518	180	PN10	345,00	164,82	110,00	11,25	2,00	6	41/60/46
	97 1 984518		PN16				17,40	3,00		
12	97 0 984520	200	PN10	380,00	181,18	117,00	12,30	2,80	6	41/60/46
	97 1 984520		PN16				19,00	4,00		
13	97 0 984522	225	PN10	400,00	187,72	123,00	14,00	3,40	6	50/60/50
	97 1 984522		PN16				21,00	5,10		
14	97 0 984525	250	PN10	443,00	207,73	133,76	16,20	4,80	4	50/60/50
	97 1 984525		PN16				25,00	7,20		

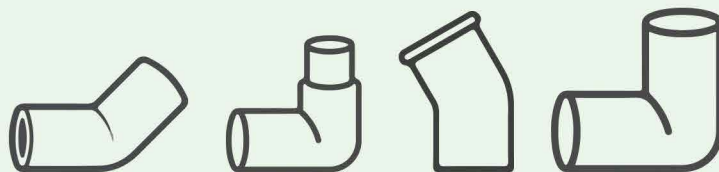
Manufacture

Hdpe pipe and fitting

for water & gas supply



Euro One Co. For Plastic industries



And more...

TEE

Ø 32 [mm] - Ø1600 [mm]

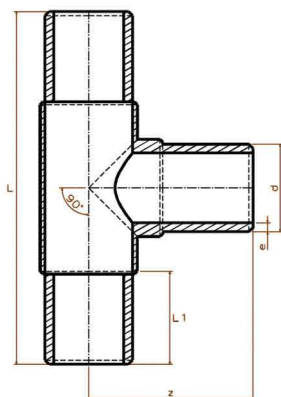
(مستترك)





INJECTION EQUAL TEE

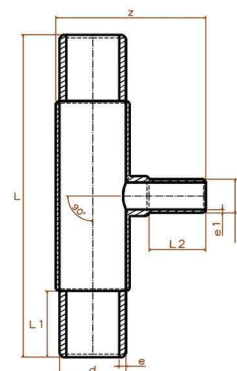
PE100 – SDR 17 – PN10 ve SDR 11 – PN16



SEQ.	PRODUCT CODE	SIZE d [mm]	PRESSURE [bar]	L [mm]	z [mm]	L ₁ [mm]	e [mm]	WEIGHT [kg]	IN A PARCEL	PCS PRICE
1	97 2 323003	32*32	PN10	173,00	80,00	45,00	2,30	0,07	100	30/60/41
	97 3 323003		PN16				3,00	0,10		
2	97 2 323004	40*40	PN10	186,00	96,30	53,00	2,80	0,10	80	30/60/41
	97 3 323004		PN16				4,05	0,15		
3	97 2 323005	50*50	PN10	214,00	111,20	60,30	3,40	0,19	50	30/60/41
	97 3 323005		PN16				4,80	0,28		
4	97 2 323006	63*63	PN10	247,00	121,90	65,00	4,12	0,31	32	30/60/41
	97 3 323006		PN16				6,37	0,47		
5	97 2 323007	75*75	PN10	277,30	133,30	69,80	4,79	0,50	20	30/60/41
	97 3 323007		PN16				7,40	0,75		
6	97 2 323009	90*90	PN10	288,70	148,00	80,00	5,80	0,71	16	30/60/41
	97 3 323009		PN16				9,20	1,07		
7	97 2 323011	110*110	PN10	343,00	165,90	89,50	6,60	1,30	14	41/60/46
	97 3 323011		PN16				10,20	1,47		
8	97 2 323012	125*125	PN10	374,00	192,50	100,90	8,15	1,61	10	41/60/46
	97 3 323012		PN16				12,60	2,41		
9	97 2 323014	140*140	PN10	358,00	182,00	93,00	8,54	1,67	8	41/60/46
	97 3 323014		PN16				13,20	2,50		
10	97 2 323016	160*160	PN10	485,00	214,00	109,10	10,60	3,40	7	50/60/50
	97 2 323016		PN16				14,65	4,67		
11	97 2 323018	180*180	PN10	515,00	232,00	113,96	10,80	3,96	4	50/60/50
	97 2 323018		PN16				16,50	5,94		
12	97 2 323020	200*200	PN10	505,00	243,00	122,30	11,70	5,70	3	50/60/50
	97 3 323020		PN16				18,70	7,70		
13	97 2 323022	225*225	PN10	533,00	251,50	121,70	13,50	6,53	3	50/60/50
	97 3 323022		PN16				20,60	9,00		
14	97 2 323025	250*250	PN10	583,00	284,00	132,45	20,50	11,20	2	50/60/50
	97 3 323025		PN16				23,20	12,89		
15	97 2 323028	280*280	PN10	590,00	290,00	136,80	16,70	11,50	1	50/60/50
	97 3 323028		PN16				25,50	15,00		
16	97 2 323031	315*315	PN10	715,00	337,50	152,65	20,70	17,90	-	-
	97 3 323031		PN16				31,20	26,85		

INJECTION REDUCED TEE

PE100 – SDR 17 – PN10 ve SDR 11 – PN16



SEQ	PRODUCT CODE	SIZE d/d1 [mm]	PRESSURE [bar]	L [mm]	z [mm]	L ₁ [mm]	L ₂ [mm]	e [mm]	e ₁ [mm]	WEIGHT [kg]	IN A PARCEL	PCS PRICE
1	97 0 004032	40/32	PN10	185,70	115,66	54,90	54,90	2,60	2,10	0,09	70	41/60/31
	PN16		4,10					3,00	0,14			
2	97 0 005032	50/32	PN10	214,00	118,00	60,00	55,70	3,10	2,20	0,16	56	41/60/31
	PN16		4,70					3,00	0,24			
3	97 0 005040	50/40	PN10	214,40	124,30	57,80	58,50	3,20	2,50	0,05	56	41/60/31
	PN16		4,90					4,00	0,26			
4	97 0 006325	63/25	PN10	279,00	153,15	101,10	79,10	4,00	2,00	0,23	45	41/60/31
	PN16		6,40					2,70	0,35			
5	97 0 006332	63/32	PN10	243,00	136,60	62,80	54,00	4,10	2,10	0,25	36	41/60/31
	PN16		6,20					3,10	0,37			
6	97 0 006340	63/40	PN10	247,47	137,20	65,25	56,40	4,10	2,50	0,07	36	41/60/31
	PN16		6,30					4,00	0,39			
7	97 0 006350	63/50	PN10	239,60	143,90	62,40	57,10	4,20	3,20	0,26	35	41/60/31
	PN16		6,30					4,70	0,39			
8	97 0 007532	75/32	PN10	272,50	149,55	67,55	50,00	4,70	2,30	0,39	25	41/60/31
	PN16		7,50					3,40	0,58			
9	97 0 007540	75/40	PN10	276,80	158,50	69,00	60,90	4,90	2,80	0,43	25	41/60/31
	PN16		7,60					4,10	0,65			
10	97 0 007550	75/50	PN10	272,30	163,40	68,00	63,00	5,00	3,40	0,41	24	41/60/31
	PN16		7,50					5,20	0,62			
11	97 0 007563	75/63	PN10	277,25	164,60	69,00	68,00	5,00	4,10	0,47	22	41/60/31
	PN16		7,60					6,63	0,70			
12	97 0 009025	90/25	PN10	283,40	154,40	76,30	36,60	5,60	2,00	0,53	21	41/60/31
	PN16		9,10					2,70	0,79			
13	97 0 009032	90/32	PN10	239,80	162,00	82,70	50,00	5,80	2,30	0,56	20	41/60/31
	PN16		9,20					3,40	0,84			
14	97 0 009040	90/40	PN10	290,00	161,90	80,00	46,00	5,80	2,60	0,56	20	41/60/31
	PN16		9,00					4,20	0,84			
15	97 0 009050	90/50	PN10	288,00	169,00	78,40	58,14	5,90	3,20	0,59	18	41/60/31
	PN16		9,20					5,20	0,89			
16	97 0 009063	90/63	PN10	286,00	180,00	77,30	69,00	6,00	4,20	0,62	16	41/60/31
	PN16		9,10					6,30	0,93			



INJECTION REDUCED TEE continue

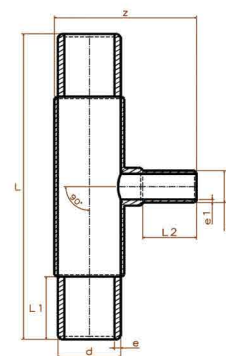
PE100 – SDR 17 – PN10 ve SDR 11 – PN16



SEQ	PRODUCT CODE	SIZE d/d1 [mm]	PRESSURE [bar]	L [mm]	z [mm]	L ₁ [mm]	L ₂ [mm]	e [mm]	e ₁ [mm]	WEIGHT [kg]	IN A PARCEL	PCS PRICE
17	97 0 009075	90/75	PN10	286,00	180,00	70,70	70,00	6,00	4,90	0,63	16	41/60/31
	97 1 009075		PN16					9,20	7,20	0,94		
18	97 0 011032	110/32	PN10	348,00	195,00	90,00	68,00	6,60	2,30	1,11	20	41/60/46
	97 1 011032		PN16					11,10	3,20	1,67		
19	97 0 011040	110/40	PN10	342,00	185,00	89,10	56,60	6,90	2,80	0,83	18	41/60/46
	97 1 011040		PN16					10,00	4,10	1,24		
20	97 0 011050	110/50	PN10	352,00	193,00	92,95	61,00	7,00	3,30	0,91	18	41/60/46
	97 1 011050		PN16					10,10	5,10	1,36		
21	97 0 011063	110/63	PN10	340,00	199,00	89,25	68,60	7,00	4,20	0,84	17	41/60/46
	97 1 011063		PN16					10,20	6,40	1,26		
22	97 0 011075	110/75	PN10	342,00	206,60	88,80	79,55	7,10	5,00	0,89	16	41/60/46
	97 1 011075		PN16					10,30	7,50	1,34		
23	97 0 011090	110/90	PN10	340,00	214,40	88,00	80,34	7,20	6,00	0,94	15	41/60/46
	97 1 011090		PN16					10,50	8,60	1,41		
24	97 0 012532	125/32	PN10	365,00	229,40	93,85	53,30	7,60	2,20	1,29	12	41/60/46
	97 1 012532		PN16					12,70	3,90	1,93		
25	97 0 012550	125/50	PN10	368,00	229,40	111,50	78,35	7,80	3,40	1,29	11	41/60/46
	97 1 012550		PN16					12,60	4,40	1,93		
26	97 0 012563	125/63	PN10	368,00	228,40	97,00	73,00	8,00	4,20	1,36	10	41/60/46
	97 1 012563		PN16					12,30	5,90	2,04		
27	97 0 012575	125/75	PN10	370,00	233,50	96,80	79,90	7,60	5,00	1,40	10	41/60/46
	97 1 012575		PN16					12,40	7,60	2,10		
28	97 0 012590	125/90	PN10	372,00	236,00	100,00	78,00	7,80	5,90	1,44	10	41/60/46
	97 1 012590		PN16					12,30	8,30	2,16		
29	97 0 125110	125/110	PN10	371,00	246,50	94,30	92,00	8,00	6,80	1,57	10	41/60/46
	97 1 125110		PN16					12,60	10,80	2,35		
30	97 0 014050	140/50	PN10	350,00	277,00	87,00	57,00	8,50	3,40	1,63	10	41/60/46
	97 1 014050		PN16					13,00	5,00	2,44		
31	97 0 014063	140/63	PN10	351,00	272,75	87,00	59,00	8,60	4,30	1,41	10	41/60/46
	97 1 014063		PN16					13,70	6,20	2,12		
32	97 0 014075	140/75	PN10	354,00	225,40	90,00	72,00	8,60	5,10	1,45	10	41/60/46
	97 1 014075		PN16					13,20	6,90	2,18		
33	97 0 014090	140/90	PN10	355,00	232,00	89,00	77,77	8,50	6,00	1,49	10	41/60/46
	97 1 014090		PN16					13,30	8,80	2,24		
34	97 0 140110	140/110	PN10	355,00	241,30	89,00	83,00	8,60	7,20	1,53	10	41/60/46
	97 1 140110		PN16					12,90	10,00	2,29		
35	97 0 140125	140/125	PN10	357,00	239,20	89,00	81,10	8,60	8,00	1,67	8	41/60/46
	97 1 140125		PN16					13,20	11,90	2,50		
36	97 0 016032	160/32	PN10	484,00	226,10	106,00	49,00	9,80	2,30	2,64	9	50/60/50
	97 1 016032		PN16					14,70	3,40	3,96		

① INJECTION REDUCED TEE **continue**

PE100 – SDR 17 – PN10 ve SDR 11 – PN16



SEQ	PRODUCT CODE	SIZE d/d1 [mm]	PRESSURE [bar]	L [mm]	z [mm]	L ₁ [mm]	L ₂ [mm]	e [mm]	e ₁ [mm]	WEIGHT [kg]	IN A PARCEL	PCS PRICE
37	97 0 016050	160/50	PN10	480,00	276,50	106,85	62,35	10,00	3,40	2,59	9	50/60/50
	PN16		14,60					5,20	3,88			
38	97 0 016063	160/63	PN10	481,00	256,00	106,60	70,00	10,00	4,20	2,58	9	50/60/50
	PN16		14,70					5,80	3,87			
39	97 0 016075	160/75	PN10	480,00	252,00	118,00	72,00	10,20	5,10	2,53	8	50/60/50
	PN16		15,00					6,80	3,80			
40	97 0 016090	160/90	PN10	488,00	277,70	103,30	91,00	10,50	5,80	2,71	8	50/60/50
	PN16		15,50					8,70	4,06			
41	97 0 160110	160/110	PN10	489,00	277,70	108,20	93,00	10,30	6,90	2,80	8	50/60/50
	PN16		14,60					11,10	4,20			
42	97 0 160125	160/125	PN10	480,00	289,65	107,40	102,40	10,20	7,60	2,77	8	50/60/50
	PN16		15,10					12,30	4,16			
43	97 0 160140	160/140	PN10	485,00	285,00	110,00	103,00	10,40	9,00	3,10	7	50/60/50
	PN16		16,00					13,00	4,65			
44	97 0 018090	180/90	PN10	506,00	305,00	114,25	95,40	11,00	5,80	3,44	5	50/60/50
	PN16		16,40					8,80	5,16			
45	97 0 180110	180/110	PN10	517,00	310,00	113,00	100,00	11,00	7,20	3,57	5	50/60/50
	PN16		16,40					10,50	5,35			
46	97 0 180125	180/125	PN10	510,00	307,30	114,80	102,40	11,20	8,00	3,53	5	50/60/50
	PN16		16,50					11,50	5,29			
47	97 0 180140	180/140	PN10	508,00	312,00	112,00	104,00	11,10	8,80	3,75	4	50/60/50
	PN16		16,60					13,60	5,63			
48	97 0 180160	180/160	PN10	508,00	315,00	114,00	110,00	11,50	10,20	3,73	4	50/60/50
	PN16		16,90					16,00	5,60			
49	97 0 020063	200/63	PN10	500,00	390,00	125,25	71,40	12,00	4,20	4,37	5	50/60/50
	PN16		19,10					6,00	6,56			
50	97 0 020075	200/75	PN10	505,00	335,00	120,00	72,00	12,20	5,00	4,47	5	50/60/50
	PN16		19,60					7,00	6,70			
51	97 0 020090	200/90	PN10	501,00	335,00	122,00	101,00	12,00	5,80	4,47	5	50/60/50
	PN16		18,70					8,20	6,70			
52	97 0 200110	200/110	PN10	507,00	331,00	120,00	108,00	12,20	6,80	4,57	4	50/60/50
	PN16		18,30					10,00	6,85			
53	97 0 200125	200/125	PN10	502,00	336,00	120,00	111,86	13,20	8,30	5,24	4	50/60/50
	PN16		20,20					11,50	7,86			
54	97 0 200140	200/140	PN10	500,00	335,00	120,60	115,40	12,50	9,00	4,73	4	50/60/50
	PN16		19,60					14,00	7,09			
55	97 0 200160	200/160	PN10	508,00	335,00	120,00	110,00	12,50	10,00	4,83	4	50/60/50
	PN16		20,10					16,10	7,25			
56	97 0 200180	200/180	PN10	504,00	348,00	121,30	109,50	13,00	11,60	4,87	3	50/60/50
	PN16		20,00					16,60	7,31			



INJECTION REDUCED TEE continue

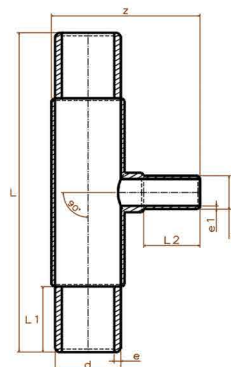
PE100 – SDR 17 – PN10 ve SDR 11 – PN16



SEQ	PRODUCT CODE	SIZE d/d1 [mm]	PRESSURE [bar]	L [mm]	z [mm]	L ₁ [mm]	L ₂ [mm]	e [mm]	e ₁ [mm]	WEIGHT [kg]	IN A PARCEL	PCS PRICE
57	97 0 022563	225/63	PN10	534,00	334,50	122,00	85,00	13,50	4,30	4,52	4	50/60/58
	97 1 022563		PN16					20,90	6,00	6,78		
58	97 0 022575	225/75	PN10	534,00	337,50	122,00	87,00	14,00	5,10	4,61	4	50/60/58
	97 1 022575		PN16					21,00	7,20	6,91		
59	97 0 022590	225/90	PN10	528,00	320,00	120,00	80,80	13,60	6,00	7,11	4	50/60/58
	97 1 022590		PN16					22,70	9,20	10,67		
60	97 0 225110	225/110	PN10	540,00	327,50	120,00	87,00	13,50	7,30	5,99	4	50/60/58
	97 1 225110		PN16					21,20	10,80	8,99		
61	97 0 225125	225/125	PN10	528,00	330,00	121,45	91,00	14,40	8,10	5,26	4	50/60/58
	97 1 225125		PN16					20,50	11,40	7,89		
62	97 0 225140	225/140	PN10	532,00	349,22	123,23	108,80	13,50	9,30	6,26	4	50/60/58
	97 1 225140		PN16					20,60	12,90	8,26		
63	97 0 225160	225/160	PN10	530,00	360,00	120,30	110,00	14,60	10,20	5,46	4	50/60/58
	97 1 225160		PN16					20,60	15,00	8,19		
64	97 0 225180	225/180	PN10	538,00	358,50	120,00	112,00	14,00	11,50	6,64	3	50/60/58
	97 1 225180		PN16					22,70	16,40	9,96		
65	97 0 225200	225/200	PN10	538,00	360,00	121,55	114,60	14,00	12,10	5,99	3	50/60/58
	97 1 225200		PN16					20,80	18,60	8,98		
66	97 0 025090	250/90	PN10	573,00	350,00	134,50	84,70	14,90	5,80	5,08	3	50/60/58
	97 1 025090		PN16					22,90	8,30	7,62		
67	97 0 250110	250/110	PN10	575,00	352,00	130,95	90,30	16,40	6,70	9,02	3	50/60/58
	97 1 250110		PN16					23,20	11,00	13,53		
68	97 0 250125	250/125	PN10	570,00	365,00	130,00	85,00	16,40	8,10	6,33	3	50/60/58
	97 1 250125		PN16					24,00	12,10	9,50		
69	97 0 250140	250/140	PN10	575,00	378,00	131,80	110,00	16,40	9,30	9,28	3	50/60/58
	97 1 250140		PN16					23,20	13,00	10,91		
70	97 0 250160	250/160	PN10	570,00	390,00	130,00	110,00	16,30	10,30	7,33	3	50/60/58
	97 1 250160		PN16					24,10	14,80	11,00		
71	97 0 250180	250/180	PN10	577,00	400,00	130,00	137,10	16,00	11,60	7,72	3	50/60/58
	97 1 250180		PN16					24,36	16,60	11,58		
72	97 0 250200	250/200	PN10	573,00	390,00	130,00	107,65	16,20	12,80	7,61	2	50/60/58
	97 1 250200		PN16					24,24	18,60	11,41		
73	97 0 250225	250/225	PN10	570,00	385,00	130,00	114,00	16,30	14,80	11,95	2	50/60/58
	97 1 250225		PN16					22,70	21,40	17,93		
74	97 0 028090	280/90	PN10	420,00	383,00	115,00	85,00	17,00	6,00	6,07	2	41/60/46
	97 1 028090		PN16					25,90	9,00	9,10		
75	97 0 280110	280/110	PN10	430,00	405,00	114,30	92,20	16,70	7,40	6,97	2	41/60/46
	97 1 280110		PN16					27,20	10,30	10,46		
76	97 0 280125	280/125	PN10	428,00	390,00	116,00	90,00	16,90	8,10	7,00	2	41/60/46
	97 1 280125		PN16					27,10	12,00	10,50		

① INJECTION REDUCED TEE **continue**

PE100 – SDR 17 – PN10 ve SDR 11 – PN16



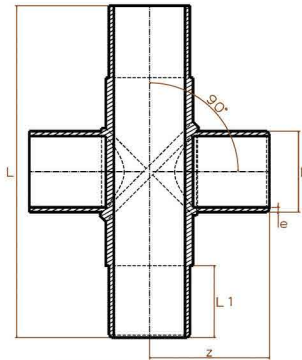
SEQ	PRODUCT CODE	SIZE d/d1 [mm]	PRESSURE [bar]	L [mm]	z [mm]	L ₁ [mm]	L ₂ [mm]	e [mm]	e ₁ [mm]	WEIGHT [kg]	IN A PARCEL	PCS PRICE
77	97 0 280140	280/140	PN10	417,00	390,00	114,00	93,00	18,40	9,00	6,86	2	41/60/46
	PN16		26,00					13,40	9,10			
78	97 0 280160	280/160	PN10	422,00	410,00	114,60	101,50	17,60	10,20	6,53	2	41/60/46
	PN16		25,63					16,10	9,79			
79	97 0 031590	315/90	PN10	485,00	447,50	144,50	115,00	18,90	5,90	9,24	2	41/60/46
	PN16		30,00					9,10	13,86			
80	97 0 315110	315/110	PN10	484,00	447,00	143,65	117,65	19,00	7,20	9,47	2	50/60/50
	PN16		28,67					11,10	14,20			
81	97 0 315125	315/125	PN10	495,00	445,00	110,00	105,00	20,20	8,10	6,67	2	50/60/50
	PN16		29,00					12,30	10,00			
82	97 0 315140	315/140	PN10	483,00	450,00	150,00	120,00	2,30	10,10	8,67	2	50/60/50
	PN16		30,20					13,60	13,00			
83	97 0 315160	315/160	PN10	703,00	482,00	148,30	125,30	20,70	12,30	15,36	2	50/60/50
	PN16		30,00					14,75	23,04			





INJECTION CROSS TEE

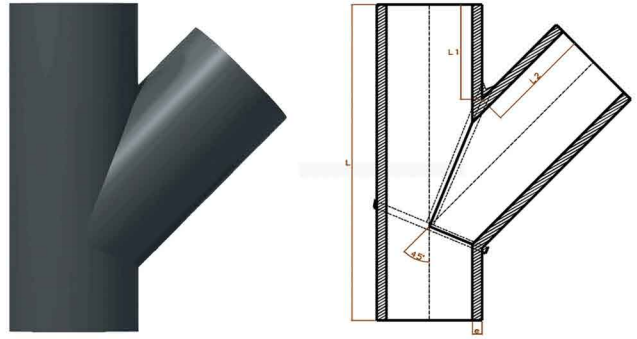
PE100 – SDR 17 – PN10 ve SDR 11 – PN16



SEQ.	PRODUCT CODE	SIZE d [mm]	PRESSURE [bar]	L [mm]	z [mm]	L ₁ [mm]	e [mm]	WEIGHT [kg]	IN A PARCEL	PCS PRICE
1	97 1 210032	32	PN10	173,00	80,00	45,00	2,30	0,08	-	-
	97 2 210032		PN16				3,00	0,13		
2	97 1 210040	40	PN10	186,00	96,30	53,00	2,80	0,13	-	-
	97 2 210040		PN16				4,05	0,19		
3	97 1 210050	50	PN10	214,00	111,20	60,30	3,40	0,24	-	-
	97 2 210050		PN16				4,80	0,36		
4	97 1 210063	63	PN10	247,00	121,90	65,00	4,12	0,40	-	-
	97 2 210063		PN16				6,37	0,60		
5	97 1 210075	75	PN10	277,30	133,30	69,80	4,79	0,63	-	-
	97 2 210075		PN16				7,40	0,94		
6	97 1 210090	90	PN10	288,70	148,00	80,00	5,80	0,90	-	-
	97 2 210090		PN16				9,20	1,35		
7	97 1 210110	110	PN10	343,00	165,90	89,50	6,60	1,62	-	-
	97 2 210110		PN16				10,20	1,83		
8	97 1 210125	125	PN10	374,00	192,50	100,90	8,15	2,02	-	-
	97 2 210125		PN16				12,60	3,03		
9	97 1 210140	140	PN10	358,00	182,00	93,00	8,54	2,06	-	-
	97 2 210140		PN16				13,20	3,10		
10	97 1 210160	160	PN10	485,00	214,00	109,10	10,60	4,14	-	-
	97 2 210160		PN16				14,65	5,68		
11	97 1 210180	180	PN10	515,00	232,00	113,96	10,80	4,82	-	-
	97 2 210180		PN16				16,50	7,22		
12	97 1 210200	200	PN10	505,00	243,00	122,30	11,70	6,96	-	-
	97 2 210200		PN16				18,70	9,40		
13	97 1 210225	225	PN10	533,00	251,50	121,70	13,50	7,88	-	-
	97 2 210225		PN16				20,60	10,86		
14	97 1 210250	250	PN10	583,00	284,00	132,45	20,50	13,60	-	-
	97 2 210250		PN16				23,20	15,65		
15	97 1 210315	315	PN10	715,00	337,50	152,65	20,70	21,50	-	-
	97 2 210315		PN16				31,20	32,25		

① SEGMENTED BRANCH TEE

PE100 – SDR 17 – PN10 ve SDR 11 – PN16

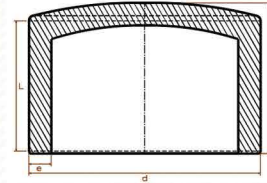


SEQ	PRODUCT CODE	SIZE d [mm]	PRESSURE [bar]	L [mm]	L ₁ [mm]	L ₂ [mm]	e [mm]	WEIGHT [kg]	IN A PARCEL	PCS PRICE
1	97 8 009090	90*90	PN10	450,00	140,00	150,00	5,40	0,92	10	41/60/46
	97 9 009090		PN16				8,20	1,34		
2	97 8 110110	110*110	PN10	450,00	140,00	150,00	6,60	1,39	7	41/60/46
	97 9 110110		PN16				10,00	2,01		
3	97 8 125125	125*125	PN10	480,00	140,00	150,00	7,40	1,85	6	41/60/46
	97 9 125125		PN16				11,40	2,75		
4	97 8 140140	140*140	PN10	550,00	160,00	180,00	8,30	2,70	5	50/60/50
	97 9 140140		PN16				12,70	3,96		
5	97 8 160160	160*160	PN10	550,00	160,00	180,00	9,50	3,56	4	50/60/50
	97 9 160160		PN16				14,60	5,25		
6	97 8 180180	180*180	PN10	600,00	180,00	200,00	10,70	4,93	3	50/60/50
	97 9 180180		PN16				16,40	7,27		
7	97 8 200200	200*200	PN10	600,00	180,00	200,00	11,90	6,14	2	41/60/46
	97 9 200200		PN16				18,20	9,06		
8	97 8 225225	225*225	PN10	700,00	180,00	200,00	13,40	8,75	2	50/60/50
	97 9 225225		PN16				20,50	12,83		
9	97 8 250250	250*250	PN10	700,00	180,00	200,00	14,80	10,87	-	-
	97 9 250250		PN16				22,70	16,01		
10	97 8 280280	280*280	PN10	750,00	180,00	200,00	16,60	14,37	-	-
	97 9 280280		PN16				25,40	21,29		
11	97 8 315315	315*315	PN10	820,00	180,00	200,00	18,70	19,69	-	-
	97 9 315315		PN16				28,60	28,96		
12	97 8 355355	355*355	PN10	920,00	200,00	220,00	21,10	27,97	-	-
	97 9 355355		PN16				32,20	41,13		
13	97 8 400400	400*400	PN10	1050,00	200,00	220,00	23,70	39,52	-	-
	97 9 400400		PN16				36,30	58,29		
14	97 8 450450	450*450	PN10	1150,00	200,00	220,00	26,70	54,13	-	-
	97 9 450450		PN16				40,90	79,97		
15	97 8 500500	500*500	PN10	1300,00	200,00	220,00	29,70	74,32	-	-
	97 9 500500		PN16				45,40	109,44		
16	97 8 560560	560*560	PN10	1400,00	200,00	220,00	33,20	99,63	-	-
	97 9 560560		PN16				50,80	146,89		
17	97 8 630630	630*630	PN10	1500,00	200,00	220,00	37,40	134,83	-	-
	97 9 630630		PN16				57,20	198,16		



INJECTION CAP

PE100 – SDR 17 – PN10 ve SDR 11 – PN16



SEQ.	PRODUCT CODE	SIZE d [mm]	PRESSURE [bar]	z [mm]	L [mm]	e [mm]	WEIGHT [kg]	IN A PARCEL	PCS PRICE
1	97 3 312002	20	PN16	39,95	36,95	2,30	0,01	1600,00	41/60/31
2	97 3 312002	25	PN16	47,75	43,75	2,70	0,01	1400,00	41/60/31
3	97 3 312003	32	PN10	44,50	37,75	2,30	0,01	900,00	41/60/31
	PN16		3,40			0,01			
4	97 3 312004	40	PN10	49,00	42,10	2,80	0,02	600,00	41/60/31
	PN16		4,20			0,03			
5	97 3 312005	50	PN10	60,00	54,00	3,20	0,03	320,00	41/60/31
	PN16		4,60			0,04			
6	97 3 312006	63	PN10	67,50	64,00	4,21	0,06	220,00	41/60/31
	PN16		6,50			0,09			
7	97 3 312007	75	PN10	66,00	63,00	4,72	0,08	150,00	41/60/31
	PN16		7,30			0,12			
8	97 3 312009	90	PN10	81,00	77,00	5,69	0,15	90,00	41/60/31
	PN16		8,80			0,23			
9	97 3 312011	110	PN10	87,40	77,50	7,20	0,24	75,00	41/60/31
	PN16		10,20			0,32			
10	97 3 312012	125	PN10	110,00	100,00	7,89	0,34	36,00	41/60/31
	PN16		12,20			0,51			
11	97 3 312014	140	PN10	115,00	106,55	8,54	0,47	36,00	41/60/37
	PN16		13,20			0,70			
12	97 3 312016	160	PN10	120,00	106,50	9,60	0,58	24,00	41/60/37
	PN16		14,60			0,87			
13	97 3 312018	180	PN10	133,00	119,20	10,80	1,06	18,00	41/60/37
	PN16		16,40			1,59			
14	97 3 312020	200	PN10	130,00	118,14	12,49	1,08	12,00	41/60/31
	PN16		19,30			1,62			
15	97 3 312022	225	PN10	148,00	137,35	14,64	1,86	7,00	41/60/31
	PN16		22,70			2,43			
16	97 3 312025	250	PN10	137,00	129,30	17,60	1,93	6,00	41/60/31
	PN16		25,00			2,89			
17	97 3 312028	280	PN10	143,00	139,00	17,60	2,65	6,00	41/60/31
	PN16		27,20			3,97			
18	97 3 312031	315	PN10	101,20	93,20	19,54	2,55	6,00	41/60/37
	PN16		30,20			3,83			
19	97 3 312035	355	PN10	110,00	90,60	22,40	3,68	5,00	41/60/37
	PN16		35,60			5,52			
20	97 3 312040	400	PN10	110,00	98,00	25,88	4,42	4,00	41/60/37
	PN16		40,00			6,63			
21	97 3 312050	500	PN10	135,00	111,00	31,00	8,07	4,00	50/60/50
	PN16		50,10			12,11			

REDUCER

Ø 32 [mm] - Ø1600 [mm]

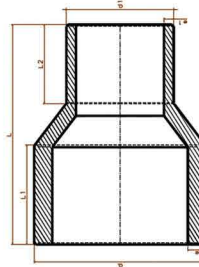
(مخفض / مسلوب)





INJECTION REDUCER

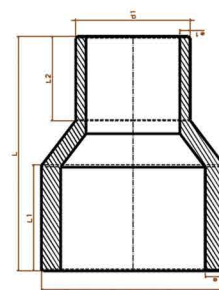
PE100 – SDR 17 – PN10 ve SDR 11 – PN16



SEQ	PRODUCT CODE	SIZE d/d1 [mm]	PRESSURE [bar]	L [mm]	L ₁ [mm]	L ₂ [mm]	e [mm]	e ₁ [mm]	WEIGHT [kg]	IN A PARCEL	PCS PRICE
1	97 6 602520	25/20	PN10	90,00	43,00	33,00	2,70	2,30	0,02	1200	41/60/31
2	97 6 603220	32/20	PN10	84,60	38,65	36,00	3,40	2,30	0,02	900	41/60/31
3	97 6 603225	32/25	PN10	83,50	37,40	35,30	3,30	2,70	0,02	800	41/60/31
4	97 6 604032	40/32	PN10	89,90	42,00	34,09	2,60	2,10	0,03	400	41/60/31
	PN16		4,20				3,40	0,04			
5	97 6 605032	50/32	PN10	110,53	52,28	48,00	3,10	2,20	0,04	230	41/60/31
	PN16		5,00				3,40	0,06			
6	97 6 605040	50/40	PN10	115,80	62,00	49,00	3,20	2,50	0,05	140	41/60/31
	PN16		5,20				4,00	0,07			
7	97 6 606332	63/32	PN10	125,00	63,00	40,00	4,00	2,30	0,07	210	41/60/31
	PN16		6,50				3,40	0,11			
8	97 6 606340	63/40	PN10	134,55	71,07	42,00	4,10	2,50	0,07	210	41/60/31
	PN16		6,50				4,15	0,11			
9	97 6 606350	63/50	PN10	150,20	69,80	63,76	4,20	3,20	0,10	120	41/60/31
	PN16		6,50				5,10	0,15			
10	97 6 607532	75/32	PN10	152,00	74,00	52,00	4,70	2,30	0,11	120	41/60/31
	PN16		7,60				3,40	0,16			
11	97 6 607540	75/40	PN10	152,00	74,00	56,00	4,90	2,80	0,11	120	41/60/31
	PN16		7,60				4,20	0,17			
12	97 6 607550	75/50	PN10	149,80	75,00	58,50	5,00	3,40	0,13	120	41/60/31
	PN16		7,60				5,20	0,19			
13	97 6 607563	75/63	PN10	158,60	80,36	64,15	5,00	4,10	0,15	75	41/60/31
	PN16		7,60				5,80	0,22			
14	97 6 609032	90/32	PN10	152,60	80,00	48,00	5,80	2,30	0,17	72	41/60/31
	PN16		9,20				3,40	0,25			
15	97 6 609040	90/40	PN10	150,00	71,80	56,20	5,80	2,60	0,15	72	41/60/31
	PN16		9,20				4,00	0,23			
16	97 6 609050	90/50	PN10	160,50	80,44	61,40	5,90	3,20	0,18	72	41/60/31
	PN16		9,20				5,00	0,27			
17	97 6 609063	90/63	PN10	167,00	83,00	68,00	6,00	4,20	0,21	70	41/60/31
	PN16		9,20				6,20	0,31			
18	97 6 609075	90/75	PN10	164,60	85,60	72,00	6,00	4,90	0,23	42	41/60/31
	PN16		9,20				7,60	0,34			

7 INJECTION REDUCER continue

PE100 – SDR 17 – PN10 ve SDR 11 – PN16



SEQ	PRODUCT CODE	SIZE d/d1 [mm]	PRESSURE [bar]	L [mm]	L ₁ [mm]	L ₂ [mm]	e [mm]	e ₁ [mm]	WEIGHT [kg]	IN A PARCEL	PCS PRICE
19	97 6 611032	110/32	PN10	174,44	86,40	50,90	6,80	2,30	0,25	50	41/60/31
	PN16		11,10				3,20	0,38			
20	97 6 611040	110/40	PN10	176,00	85,60	57,00	6,90	2,80	0,26	50	41/60/31
	PN16		11,10				4,08	0,39			
21	97 6 611050	110/50	PN10	183,30	92,00	59,50	7,00	3,30	0,31	48	41/60/31
	PN16		11,10				5,20	0,46			
22	97 6 611063	110/63	PN10	186,45	90,20	64,00	7,00	4,20	0,31	45	41/60/31
	PN16		11,10				6,00	0,47			
23	97 6 611075	110/75	PN10	187,60	86,70	69,00	7,10	5,00	0,33	42	41/60/31
	PN16		11,10				7,60	0,50			
24	97 6 611090	110/90	PN10	186,00	83,30	80,50	7,20	6,00	0,37	36	41/60/31
	PN16		11,10				9,20	0,56			
25	97 6 612575	125/75	PN10	194,00	105,45	62,00	7,60	5,00	0,35	30	41/60/31
	PN16		11,40				6,80	0,53			
26	97 6 612590	125/90	PN10	181,00	80,70	77,75	7,80	5,90	0,37	34	41/60/46
	PN16		11,60				9,20	0,56			
27	97 6 6115110	125/110	PN10	195,80	89,00	88,60	8,00	6,80	0,48	34	41/60/46
	PN16		12,38				11,00	0,72			
28	97 6 614090	140/90	PN10	216,00	109,50	76,50	8,50	6,00	0,61	14	41/60/31
	PN16		14,00				8,90	0,91			
29	97 6 690110	140/110	PN10	220,30	114,00	89,20	8,60	7,20	0,62	14	41/60/31
	PN16		13,80				10,70	0,93			
30	97 6 690125	140/125	PN10	216,44	108,90	99,44	8,60	8,00	0,65	14	41/60/31
	PN16		13,00				11,40	0,97			
31	97 6 616063	160/63	PN10	230,80	110,00	69,60	10,00	4,20	0,74	24	41/60/46
	PN16		14,80				6,00	1,11			
32	97 6 616075	160/75	PN10	230,70	111,35	69,35	10,00	5,00	0,82	24	41/60/46
	PN16		14,80				7,60	1,23			
33	97 6 616090	160/90	PN10	252,36	109,90	95,10	10,50	5,80	0,88	14	41/60/31
	PN16		15,70				9,20	1,32			
34	97 6 689110	160/110	PN10	224,90	102,70	83,90	10,30	6,90	0,83	14	41/60/31
	PN16		15,00				11,10	1,25			
35	97 6 689125	160/125	PN10	245,20	117,20	100,80	10,20	7,60	0,98	14	41/60/31
	PN16		15,30				12,60	1,47			
36	97 6 689140	160/140	PN10	235,60	114,00	102,00	10,10	9,10	0,97	12	41/60/31
	PN16		14,60				14,00	1,46			
37	97 6 618090	180/90	PN10	281,00	129,60	81,70	11,00	5,80	1,13	12	41/60/37
	PN16		18,00				9,10	1,70			
38	97 6 688110	180/110	PN10	252,70	118,00	99,00	11,00	7,20	1,04	12	41/60/37
	PN16		18,00				10,80	1,56			

1 INJECTION REDUCER **continue**

PE100 - SDR 17 - PN10 ve SDR 11 - PN16

REDUCER
section

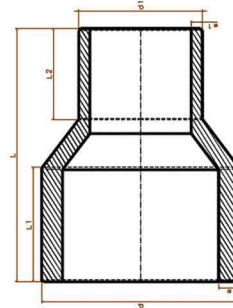
SEQ	PRODUCT CODE	SIZE d/d1 [mm]	PRESSURE [bar]	L [mm]	L ₁ [mm]	L ₂ [mm]	e [mm]	e ₁ [mm]	WEIGHT [kg]	IN A PARCEL	PCS PRICE
39	97 6 688125	180/125	PN10	278,40	130,45	94,00	11,20	8,00	1,30	12	41/60/37
	PN16		18,20				12,60	1,95			
40	97 6 688140	180/140	PN10	253,10	121,84	111,60	11,10	8,80	1,23	12	41/60/37
	PN16		18,20				14,10	1,85			
41	97 6 688160	180/160	PN10	251,70	116,80	100,44	11,30	10,00	1,29	8	41/60/37
	PN16		17,52				14,60	1,93			
42	97 6 620090	200/90	PN10	278,56	125,90	98,00	12,00	5,80	1,27	12	41/60/46
	PN16		20,20				8,70	1,91			
43	97 6 699110	200/110	PN10	283,26	131,24	101,30	12,20	6,80	1,41	12	41/60/46
	PN16		20,20				10,80	2,11			
44	97 6 699125	200/125	PN10	281,60	126,40	100,80	12,30	8,00	1,45	12	41/60/46
	PN16		20,20				11,50	2,17			
45	97 6 699140	200/140	PN10	287,00	128,00	113,00	12,50	9,00	1,48	12	41/60/46
	PN16		20,20				12,80	2,22			
46	97 6 699160	200/160	PN10	274,00	127,87	111,00	12,50	10,00	1,65	10	41/60/46
	PN16		20,20				15,20	2,48			
47	97 6 699180	200/180	PN10	278,75	135,76	104,50	13,00	11,60	1,86	10	41/60/46
	PN16		19,30				18,00	2,79			
48	97 6 698110	225/110	PN10	290,60	145,85	100,45	14,50	7,20	1,79	8	41/60/46
	PN16		21,20				10,80	2,69			
49	97 6 698125	225/125	PN10	306,45	151,20	111,00	14,40	8,10	1,94	8	41/60/46
	PN16		20,60				12,70	2,91			
50	97 6 698140	225/140	PN10	301,40	153,20	102,70	14,60	8,60	2,11	8	41/60/46
	PN16		21,60				14,10	3,16			
51	97 6 698160	225/160	PN10	300,00	151,00	106,00	14,60	10,20	2,23	6	41/60/46
	PN16		21,50				15,80	3,34			
52	97 6 698180	225/180	PN10	299,00	150,83	108,90	14,80	10,90	2,18	6	41/60/46
	PN16		22,70				16,40	3,27			
53	97 6 698200	225/200	PN10	302,70	155,10	118,00	14,00	12,10	2,43	6	41/60/46
	PN16		20,70				20,50	3,65			
54	97 6 697110	250/110	PN10	276,40	96,40	114,00	15,00	7,20	1,80	12	50/60/50
	PN16		23,20				11,00	2,70			
55	97 6 697125	250/125	PN10	265,00	95,00	114,00	15,40	8,00	1,80	12	50/60/50
	PN16		23,00				12,10	2,70			
56	97 6 697140	250/140	PN10	267,67	89,12	108,20	15,60	9,10	1,96	12	50/60/50
	PN16		23,50				12,90	2,94			
57	97 6 697160	250/160	PN10	272,00	96,27	111,50	15,80	10,20	2,16	12	50/60/50
	PN16		22,70				14,90	3,24			
58	97 6 697180	250/180	PN10	273,00	96,50	113,80	16,00	11,60	2,27	12	50/60/50
	PN16		22,70				16,60	3,40			

SEQ	PRODUCT CODE	SIZE d/d1 [mm]	PRESSURE [bar]	L [mm]	L ₁ [mm]	L ₂ [mm]	e [mm]	e ₁ [mm]	WEIGHT [kg]	IN A PARCEL	PCS PRICE
59	97 6 697200	250/200	PN10	263,80	93,70	105,60	16,20	12,80	2,33	8	50/60/50
	97 5 697200		PN16				22,90	19,00	3,50		
60	97 6 697225	250/225	PN10	262,80	104,70	114,70	16,00	14,00	2,57	8	50/60/50
	97 5 697225		PN16				22,70	21,40	3,86		
61	97 6 696110	280/110	PN10	204,00	72,00	64,00	17,00	7,20	1,81	8	41/60/46
	97 5 696110		PN16				27,20	10,30	2,72		
62	97 6 696125	280/125	PN10	180,00	70,00	65,00	17,40	8,00	1,89	8	41/60/46
	97 5 696125		PN16				27,00	12,10	2,84		
63	97 6 696160	280/160	PN10	184,20	70,55	68,20	17,60	10,20	1,93	6	41/60/46
	97 5 696160		PN16				26,25	14,60	2,89		
64	97 6 696180	280/180	PN10	186,00	73,60	71,30	17,60	11,00	1,95	6	41/60/46
	97 5 696180		PN16				27,20	17,00	2,93		
65	97 6 696200	280/200	PN10	181,00	74,00	77,00	18,00	12,00	2,08	6	41/60/46
	97 5 696200		PN16				28,00	18,20	3,12		
66	97 6 696225	280/225	PN10	174,60	73,00	71,40	17,50	13,60	2,00	6	41/60/46
	97 5 696225		PN16				26,50	20,50	3,00		
67	97 6 696250	280/250	PN10	181,00	73,80	82,00	18,00	15,20	2,32	6	41/60/46
	97 5 696250		PN16				27,50	25,00	3,48		
68	97 6 695160	315/160	PN10	235,00	87,50	104,70	20,00	10,20	2,37	6	41/60/46
	97 5 695160		PN16				30,00	14,75	3,55		
69	97 6 695200	315/200	PN10	221,40	85,97	86,26	20,20	12,10	2,76	6	41/60/46
	97 5 695200		PN16				29,25	18,90	4,14		
70	97 6 695225	315/225	PN10	220,00	85,60	86,50	20,30	14,00	2,85	6	41/60/46
	97 5 695225		PN16				30,00	21,00	4,28		
71	97 6 695250	315/250	PN10	214,20	86,20	89,00	19,00	16,00	3,00	4	41/60/46
	97 5 695250		PN16				30,00	23,00	4,50		
72	97 6 695280	315/280	PN10	206,00	79,55	92,50	20,50	17,20	3,03	4	41/60/46
	97 5 695280		PN16				29,20	25,50	4,54		
73	97 6 694200	355/200	PN10	240,00	88,40	75,00	22,00	12,60	3,63	3	41/60/37
	97 5 694200		PN16				35,30	18,60	5,45		
74	97 6 694225	355/225	PN10	240,70	88,80	81,80	22,30	14,00	3,85	3	41/60/37
	97 5 694225		PN16				33,90	21,20	5,77		
75	97 6 694250	355/250	PN10	238,24	92,00	76,40	23,20	16,20	3,98	3	41/60/37
	97 5 694250		PN16				33,30	23,00	5,97		
76	97 6 694280	355/280	PN10	229,00	96,00	74,00	23,10	18,00	4,25	3	41/60/37
	97 5 694280		PN16				33,30	26,50	6,37		
77	97 6 694315	355/315	PN10	115,50	36,24	68,34	23,00	20,00	2,37	3	41/60/46
	97 5 694315		PN16				32,20	31,00	3,56		
78	97 6 693280	400/280	PN10	192,00	85,00	54,30	25,00	17,00	4,20	4	41/60/46
	97 5 693280		PN16				36,80	25,40	6,30		

1 INJECTION REDUCER continue

PE100 - SDR 17 - PN10 ve SDR 11 - PN16

REDUCER section



SEQ	PRODUCT CODE	SIZE d/d1 [mm]	PRESSURE [bar]	L [mm]	L1 [mm]	L2 [mm]	e [mm]	e1 [mm]	WEIGHT [kg]	IN A PARCEL	PCS PRICE
79	97 6 693315	400/315	PN10	193,10	90,57	65,00	25,30	20,00	4,40	4	41/60/46
	PN16		36,60				29,60	6,60			
80	97 6 693355	400/355	PN10	190,50	90,20	77,20	25,90	22,60	4,34	3	41/60/46
	PN16		36,93				32,70	6,51			
81	97 6 692250	450/250	PN10	257,00	102,90	87,50	28,60	15,60	6,07	2	41/60/46
	PN16		41,50				22,70	9,10			
82	97 6 692280	450/280	PN10	260,00	104,16	91,10	29,00	18,00	6,44	2	41/60/46
	PN16		42,60				26,10	9,66			
83	97 6 692315	450/315	PN10	220,30	87,40	67,20	29,00	20,00	6,87	2	41/60/46
	PN16		42,30				29,30	10,30			
84	97 6 692355	450/355	PN10	252,00	107,25	90,30	28,60	23,10	7,32	2	41/60/46
	PN16		41,00				33,40	10,98			
85	97 6 692400	450/400	PN10	241,88	96,80	99,90	29,00	26,00	7,33	2	50/60/50
	PN16		42,30				36,40	11,00			
86	97 6 691315	500/315	PN10	233,00	77,45	67,70	31,00	20,50	7,17	3	50/60/50
	PN16		46,50				30,00	10,76			
87	97 6 690500	560/500	PN10	400,00	150,00	150,00	32,00	29,00	20,20	-	-
	PN16		51,00				45,20	28,30			
88	97 6 689560	630/560	PN10	400,00	150,00	150,00	37,20	31,80	25,30	-	-
	PN16		57,00				50,40	30,20			
89	97 6 688630	710/630	PN10	160,00	40,00	50,00	42,00	36,90	13,00	-	-
	PN16		64,20				56,80	19,00			
90	97 6 687710	800/710	PN10	150,00	60,00	60,00	47,20	41,90	16,00	-	-
	PN16		72,50				64,60	22,90			

TRANSITION

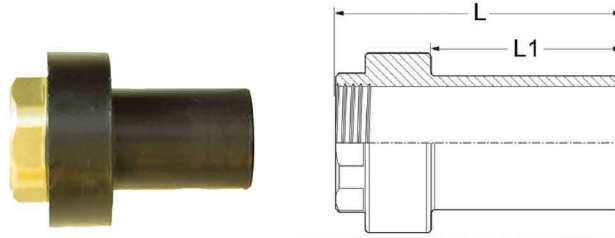
Ø 32 [mm] - Ø 450 [mm]
PE - BRASS TRANSITION

(محول نحاس)



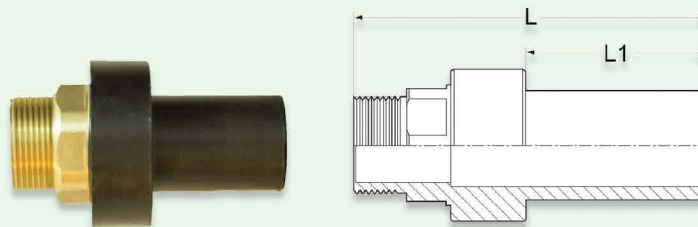
① PE-BRASS TRANSITION (FEMALE THREADED)

TRANSITION
section



SEQ	PRODUCT CODE	SIZE d [mm]	L [mm]	L ₁ [mm]	WEIGHT [kg]	IN A PARCEL	PCS PRICE
1	97 7 443032	32/1	75,00	40,00	0,12	100	25/35/27
2	97 7 443432	32/3/4	75,00	40,00	0,12	100	25/35/27
3	97 7 443040	40/1 1/4	80,00	45,00	0,24	50	25/35/27
4	97 7 443050	50/1 1/2	90,00	60,00	0,34	40	25/35/27
5	97 7 443063	63/2	115,00	73,00	0,48	20	25/35/27
6	97 7 443075	75	130,00	90,00	0,68	12	25/35/27

① PE-BRASS TRANSITION (MALE THREADED)



SEQ	PRODUCT CODE	SIZE d [mm]	L [mm]	L ₁ [mm]	WEIGHT [kg]	IN A PARCEL	PCS PRICE
1	97 7 433032	32/1	95,00	47,00	0,15	100	25/35/27
2	97 7 433432	32/3/4	95,00	47,00	0,15	100	25/35/27
3	97 7 433040	40/1 1/4	95,00	47,00	0,25	50	25/35/27
4	97 7 433050	50/1 1/2	110,00	57,00	0,53	40	25/35/27
5	97 7 433063	63/2	135,00	65,00	0,65	20	25/35/27
6	97 7 433075	75	150,00	100,00	0,81	12	25/35/27

QUALITY AND TESTING

EURO ONE PLAST pipes are manufactured according to international and Egyptian standards.

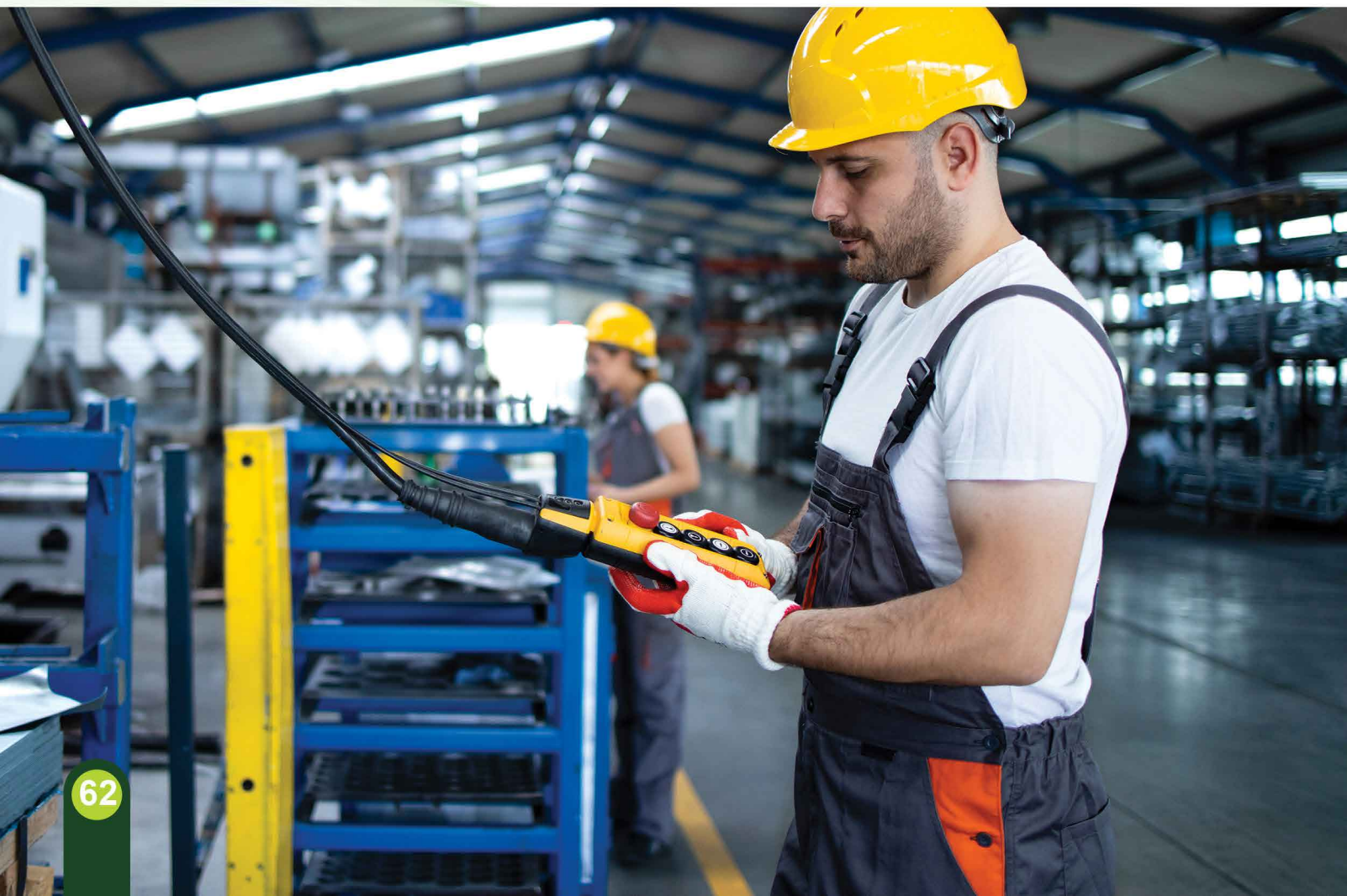
EURO ONE PLAST pipes are manufactured according to international and Egyptian standards, therefore we conduct the following stringent quality checks at each stage of manufacturing to ensure best quality product is delivered to the customer. Using the most updated testing equipment to insure the most accuracy results and measurements, to guarantee the highest quality.

1- We begin the testing process with raw materials tests:

- Bulk density test
- K- Value test
- Particle size by sieve analysis
- Melt flow rate

2- Then there're tests on the pipe itself

- Visual inspection & appearance
- Dimensional measures
- Tensile strength test
- Hydrostatic Pressure Test
- Elongation at break
- Impact test & slow crack growth rate
- Internal pressure test
- Carbon black content & dispersion
- Water absorption test
- Methylene chloride test





الجودة والاختبار

يتم تصنيع مواسير يورو وان بلاست وفق المواصفات القياسية العالمية وكذلك المصرية، لذلك نجري فحوصات الجودة الصارمة الدقيقة في كل مرحلة من مراحل التصنيع لضمان تسليم أفضل المنتجات للعملاء. وباستخدام أحدث معدات الاختبار للتأكد من دقة النتائج والقياسات لضمان أعلى جودة.

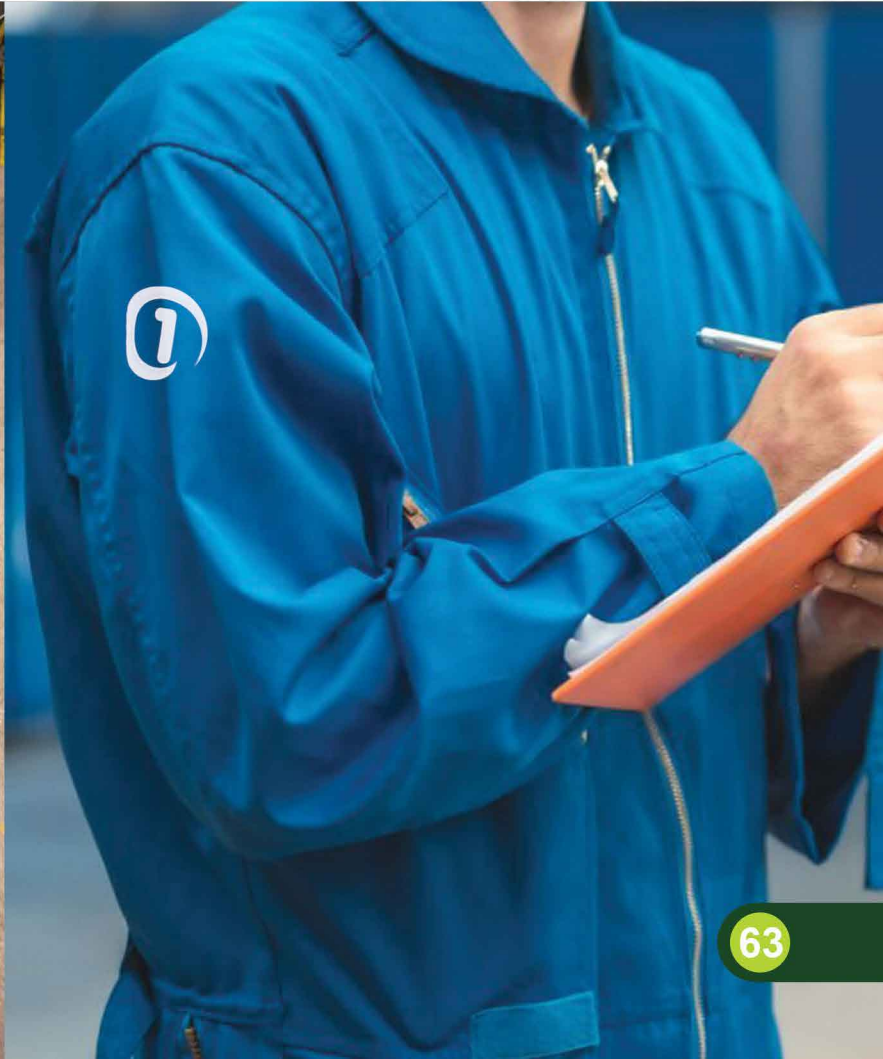
1. تبدأ عمليات الاختبار والجودة باختبار المواد الخام أولاً:

• اختبار الكثافة الظاهرية – حجم الحبيبات – معدل الانصهار والذوبان .



2. ثم بعد ذلك نجري العديد من الاختبارات على المواسير بعد الإنتاج:

- الفحص البصري والظاهري
- قياس الأبعاد
- قياسات الشد والاستطالة والجهد
- قياسات الضغوط الهيدروستاتيكية والداخلية
- قياسات الكسر والسحق والصددمات
- قياسات الحرارة.
- اختبارات كلوريد الميثيلين والأسيتون وامتصاص المياه
- قياس أسود الكربون



CERTIFICATES

الشهادات المعتمدة..





www.euro-1.com





EURO  **ONE**
PLASTIC INDUSTRIES

صُناع المستقبل
FUTURE MAKERS

www.euro-1.com



EURO
PLASTIC INDUSTRIES
ONE

يورو وان بلاست للصناعات البلاستيكية
شركة مساهمة مصرية